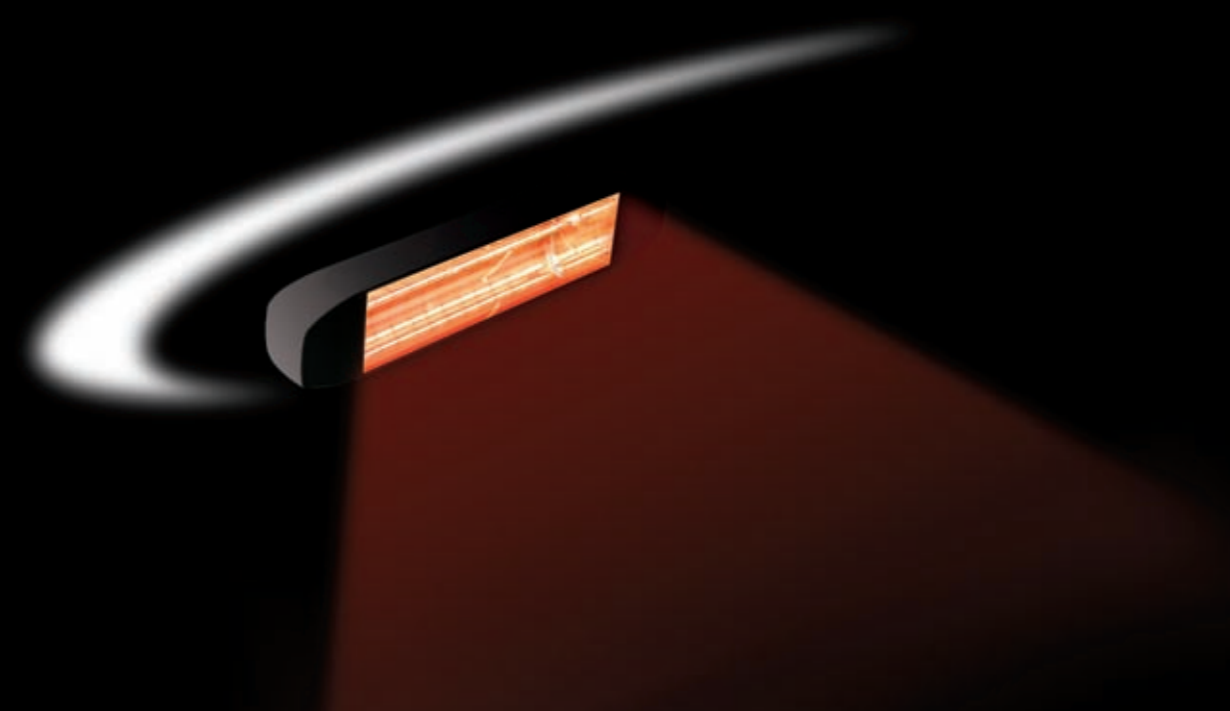


# HELIOSA®

HEAT AND DESIGN MADE IN ITALY

by STAR PROGETTI

# Hi-design



# HELIOSA®

by STAR PROGETTI

# Hi-design



**STAR PROGETTI**  
TECNOLOGIE APPLICATE SPA

Via Pasubio 4/D  
20067 Tribiano MI - Italia  
Tel +39 02 90 63 92 61  
Fax +39 02 90 63 92 59

[info@starprogetti.com](mailto:info@starprogetti.com)  
[www.starprogetti.com](http://www.starprogetti.com)

**STAR PROGETTI**  
**FRANCE SARL**

345, Rue du Bois Bernoux  
71290 CUISERY - FRANCE  
Tel +33 (0)3 85 40 12 62  
Fax + 33 (0)3 85 40 06 91

[www.starprogetti.com](http://www.starprogetti.com)



### DESIGN AND BUILD

Star Progetti, international leader since 1993 in the production of over 100 models of infrared heaters, produces and distributes its products in over 60 countries and was chosen as a partner in the realization of heating projects of primary world architectural works.

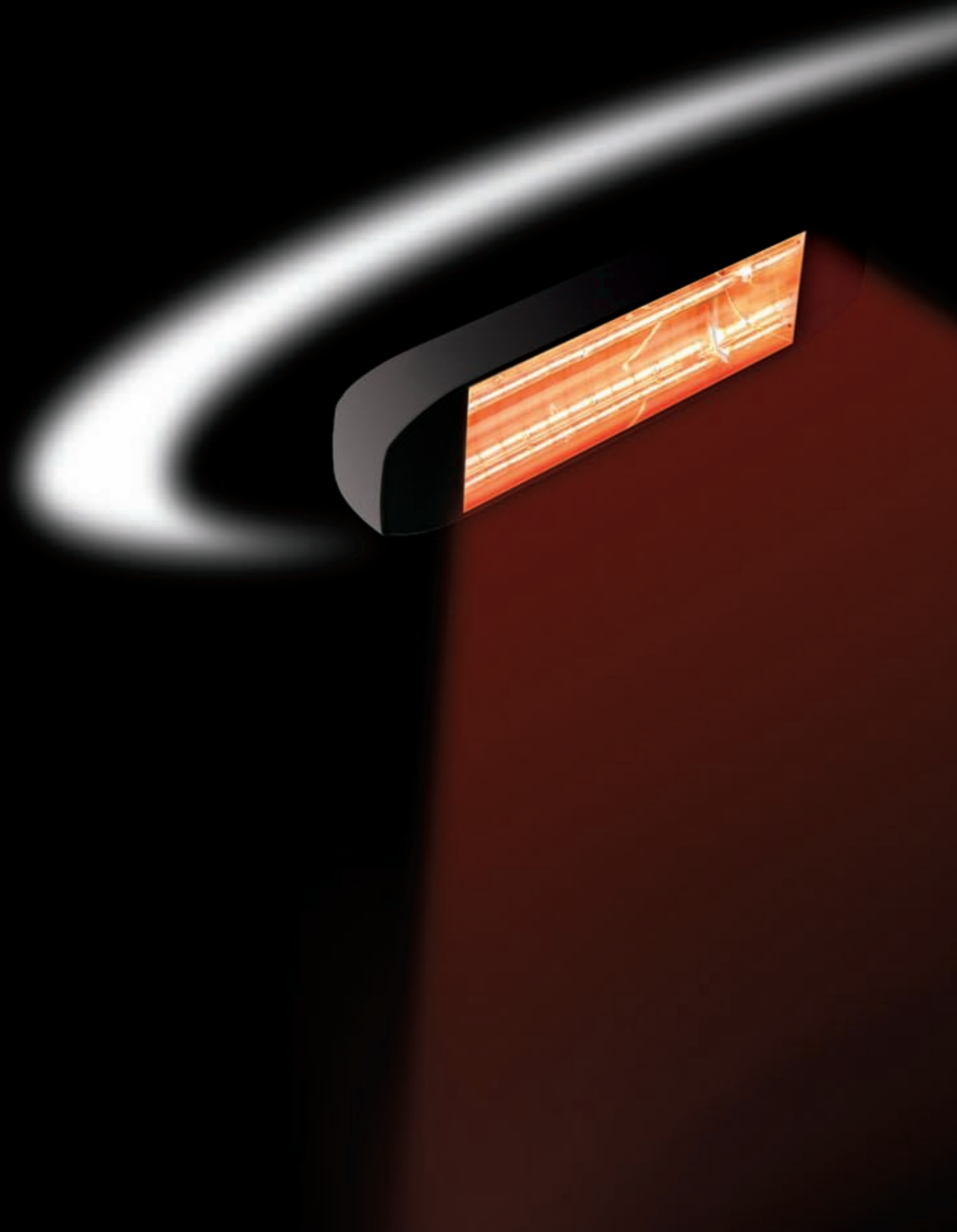
Thanks to its experience and to the continuous research in the infrared sector, in addition to other lines for different uses, STAR PROGETTI has created the line of HELIOSA® Hi-Design heaters that combines an elegant design with the most advanced infrared technology.

### ITALIAN INDUSTRIAL DESIGN MADE IN ITALY

The pleasing and soft design with rounded shapes of the HELIOSA® Hi-design line was created by the Design Engineer Mauro Cozzi of Milan.

HELIOSA® Hi-design heaters in White Carrara RAL 9016 colour, which enhances its elegance, have been studied to suit any type of furnishing. All heaters are manufactured by Star Progetti in Italy and electronically checked by a special equipment issuing a checking report about the safety and functionality of the heaters.

REGISTERED MODELS  
Mauro Cozzi – Industrial Designer



MADE IN ITALY - PIONEERING DESIGN



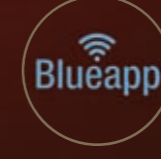
LOCAL WARMING AND ENERGY SAVING



SPECIAL INFRACALOR® AMBER LIGHT BULB WHICH CREATES A PLEASANT ENVIRONMENT BY ELIMINATING 80% OF LIGHT EMISSIONS.



IPX5 DEGREE OF PROTECTION PROTECTED AGAINST WATER JETS



CONTROL FROM SMARTPHONE WITH BLUEAPP BOX

### HELIOSA® HI-DESIGN DEVELOPED TO HEAT WITH ELEGANCE:

- Restaurants and pubs
- Hotels and Spa
- Rooftop and terraces
- Outdoor bar areas and gazebos
- Winter gardens, verandas
- Houses, basements, patios
- Huts and chalets
- Historical buildings, castles and ancient villas
- Showrooms, boutiques and shops

### HEAT WITH MORE POWER

The HELIOSA® Hi-Design heaters, like all those branded Star Progetti, use special patented reflectors (developed by Star Progetti thanks to his decades of experience in research and application of infrared technology) which, optimizing the refraction of infrared rays, guarantee maximum caloric efficiency and considerable energy savings.

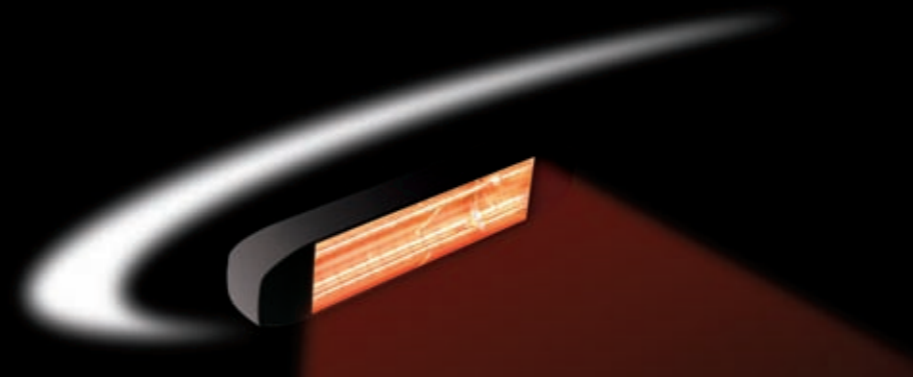
Thanks to all these features e with the same consumption, the heaters HELIOSA® Hi-Design are the most performing available.

### ENERGY SAVING

This is achieved with the heaters HELIOSA® Hi-Design, considerable savings energy since heating a larger area, more performing (thanks to the patented reflectors) allow to get a heating located more efficient. Splitting the area of interest into multiple areas with different operating temperatures, it is possible to heat each area individually, for the necessary time, optimizing the energy consumption.

### ADVANTAGES OF HELIOSA® HI-DESIGN

- Immediate heat like the sun
- Localized heat, directional and without dispersions - Local Warming
- Absence of combustion and odors
- Does not raise dust
- Reduced operating costs of over 70% compared to traditional systems (only € 0.15 per kW / h)
- Savings of over 60% because heats only the areas of interest, without dispersions



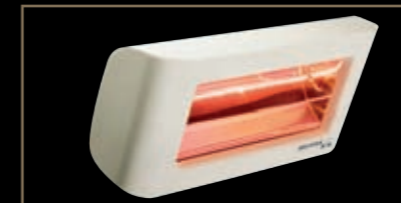
HELIOSA®  
HI DESIGN 11



HELIOSA®  
HI DESIGN 33



HELIOSA®  
HI DESIGN 44



HELIOSA®  
HI DESIGN 55



HELIOSA®  
HI DESIGN 66



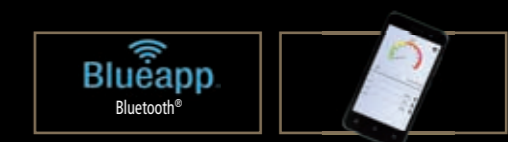
HELIOSA®  
HI DESIGN 77



HELIOSA®  
HI DESIGN 88

### CONTROL FROM SMARTPHONE WITH BLUEAPP BOX AND BLUEAPP APP

With BLUAPP BOX it is possible check up to two heaters directly from smartphone



#### With the APP, you can:

- Turn the heater on and off
- Adjust the power gradually from 0 to 100% for single heater or simultaneously for all the heaters connected to the operating area of the transmitter
- Customize heater profiles and set security password
- Set sleep timer

Available for free on:



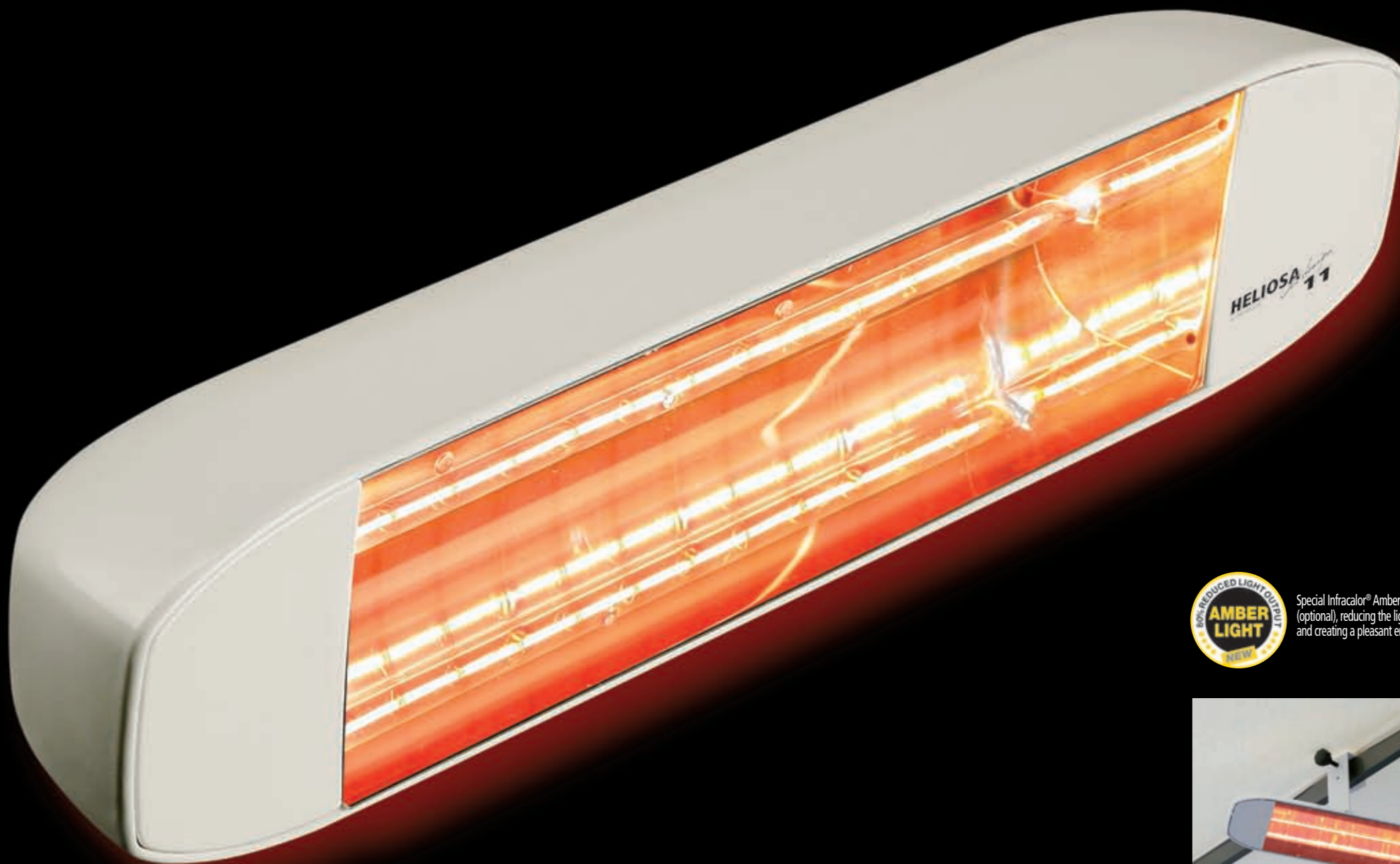
The Heliosa® 11-44-66 models are available with a special Infracalor® Amber light bulb (optional), reducing the light output by 80% and creating a pleasant environment. OPTIONAL ON DEMAND



# HELIOSA® 11

## Hi-design

by STAR PROGETTI



### HELIOSA 11 - 2000 WATTS IP20 (Code 11B20 / 11FM20)

- Revolving model for wall
- For inside areas or weather protected outside areas
- Power 2000 Watts
- IP20 protection rating
- Accessories provided:
  - 5 m / 16,40 ft electric cable with switch
  - schuko plug
  - stainless steel grid
  - wall bracket and mobile stand
- Max installation height 2,00-2,30 m / 6,56-7,54 ft
- Colours White Carrara RAL 9016 (Code 11B20) or Cast Iron (Code 11FM20)
- Heated area approximately 12-15 m<sup>2</sup> / 129,17-161,46 ft<sup>2</sup> (\*see page 37)

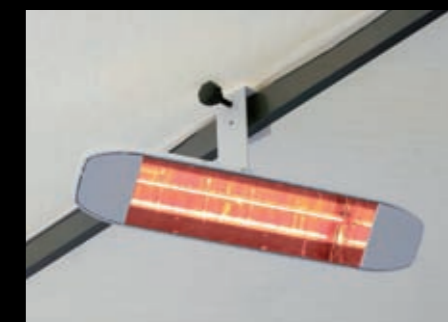


### HELIOSA 11 - 1500 WATTS IPX5 WATERPROOF (Code 11BX5/11FMX5)

- Revolving model with rotating bracket for attachment under umbrellas, canopies and to walls
- Suitable for installations under parasols by means of a special bracket
- Power 1500 Watts
- IPX5 protection rating - Totally protected against rain and water sprays (Star Progetti Patent)
- Accessories provided:
  - 1,5 m / 4,92 ft electrical cable
  - stainless steel grid
  - rotating bracket support for attachment under umbrellas and for wall mounting
  - support for attachment under canopies (optional see page 32)
- Max installation height 2,00-2,30 m / 6,56-7,54 ft
- Colour White Carrara RAL 9016 (code 11BX5) Cast iron (code 11FMX5)
- Heated area roughly 12-15 m<sup>2</sup> / 129,17-161,46 ft<sup>2</sup> (\*see page 37)



Special Infracor® Amber light bulb (optional), reducing the light output by 80% and creating a pleasant environment.



ROTATING BRACKET FOR UMBRELLAS

DIMENSIONS	45,5x13x9 cm	17,91x5,11x3,54 inc.
PACKAGING	50,5x21x14,5 cm	19,88x8,26x5,70 inc.
NET WEIGHT	1,00 kg	2,20 lb
GROSS WEIGHT	1,90 kg	4,18 lb
PALLET	96 pcs.	
BAR CODE	8025947102800 (Code 11B20 White Carrara)	
	8025947102824 (Code 11FM20 Cast Iron)	
	8025947102817 (Code 11BX5 White Carrara)	
	8025947103524 (Code 11FMX5 Cast Iron)	



REGISTERED MODELS HELIOSA® HI DESIGN is a registered trademark of STAR PROGETTI's heaters

# HELIOSA® 33

by STAR PROGETTI Hi-design

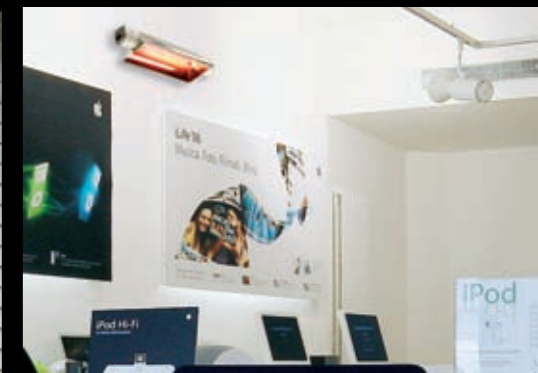


## HELIOSA 33 - 1300 WATTS IP20 (Code 33B13)

- Revolving model for wall installation
- For inside areas
- Power 1300 Watts - **BULB WITH R7S CAPS**
- Wide reflector
- IP20 protection rating
- Accessories provided:
  - 5 m / 16,40 ft electrical cable for special installation, switch on unit
  - schuko plug
  - grid
  - wall attachment and mobile stand bracket
- Max installation height 1,90-2,20 m / 6,23-7,21 ft
- Colour White Carrara RAL 9016
- Heated area roughly 15 m<sup>2</sup> / 161,46 ft<sup>2</sup> (\*see page 37)



DIMENSIONS	43,5x12x13,5 cm	17,12x4,72x5,31 inc.
PACKAGING	44x20x20 cm	17,32x7,87x7,87 inc.
NET WEIGHT	1,10 kg	2,42 lb
GROSS WEIGHT	2,00 kg	4,40 lb
PALLET	64 pcs.	
BAR CODE	8025947102862	



REGISTERED MODELS HELIOSA® HI DESIGN is a registered trademark of STAR PROGETTI's heaters

# HELIOSA® 44

by STAR PROGETTI

## Hi-design



### HELIOSA 44 - 1500 WATTS IPX5 WATERPROOF (Code 44B15)

- Revolving model for wall installation
- For inside and outside areas
- Power 1500 Watts
- IPX5 protection rating (Star Progetti Patent)
- Accessories provided:
  - 1,5 m / 4,92 ft electrical cable
  - stainless steel grid
  - wall bracket
- Max installation height 2,30-2,50 m / 7,54-8,20 ft
- Colour White Carrara RAL 9016
- Heated area roughly 15-20 m<sup>2</sup> / 161,46-215,28 ft<sup>2</sup> (\*see page 37)



### HELIOSA 44 - 2000 WATTS IPX5 WATERPROOF (Code 44B20)

- Revolving model for wall installation
- For inside and outside areas
- Power 2000 Watts
- IPX5 protection rating (Star Progetti Patent)
- Accessories provided:
  - 1,5 m / 4,92 ft electrical cable
  - stainless steel grid
  - wall bracket
- Max installation height 2,30-2,50 m / 7,54-8,20 ft
- Colour White Carrara RAL 9016
- Heated area roughly 15-20 m<sup>2</sup> / 161,46-215,28 ft<sup>2</sup> (\*see page 37)



### HELIOSA 44 - 2000 WATTS IPX5 WATERPROOF (Code 44BMOB / 44FMOB)

- Model with 5 m / 16,40 ft electric cable for special installation
- For inside and outside areas
- Power 2000 Watts
- IPX5 protection rating (Star Progetti Patent)
- Accessories provided:
  - 5 m / 16,40 ft electric cable
  - schuko plug
  - stainless steel grid
- Colour White Carrara RAL 9016 (Code 44BMOB) or Cast Iron (Code 44FMOB)
- Heated area roughly 15-20 m<sup>2</sup> / 161,46-215,28 ft<sup>2</sup> (\*see page 37)



Special Infralor® Amber light bulb (optional), reducing the light output by 80% and creating a pleasant environment.

DIMENSIONS	45,5x14x15,7 cm	17,91x5,51x6,18 inc.
PACKAGING	49,5x26,5x21 cm	19,48x10,43x8,26 inc.
NET WEIGHT	1,60 kg	3,52 lb
GROSS WEIGHT	2,50 kg	5,51 lb
PALLET	42 pcs.	
BAR CODE	8025947102879 (Code 44B15 White Carrara)	
	8025947102886 (Code 44B20 White Carrara)	
	8025947102893 (Code 44BMOB White Carrara)	
	8025947102909 (Code 44FMOB Cast Iron)	



# HELIOSA® 55

## Hi-design

by STAR PROGETTI



### HELIOSA 55 - 2000 WATTS IPX5 WATERPROOF (Code 55B20)

- Revolving model for wall installation
- For inside areas or outside areas
- Power 2000 Watts
- IPX5 protection rating - Totally protected against rain and water sprays (Star Progetti Patent)
- Accessories provided:
  - 1,5 m / 4,92 ft electrical cable, stainless steel grid
  - wall bracket
- Max installation height 2,50-2,80 m / 8,20-9,18 ft
- Colour White Carrara RAL 9016
- Heated area roughly 20-25 m<sup>2</sup> / 215,28-269,10 ft<sup>2</sup> (\*see page 37)



### HELIOSA 55 - 1500 WATTS IPX5 WATERPROOF (Code 55BX5 / 55FMX5)

- Model with 5 m / 16,40 ft electric cable for special installation
- For inside and outside areas
- Power 1500 Watts
- IPX5 protection rating - Totally protected against rain and water sprays (Star Progetti Patent)
- Accessories provided:
  - 5 m / 16,40 ft electrical cable, schuko plug
  - stainless steel grid, wall and mobile stand bracket
- Max installation height 2,50-2,80 m / 8,20-9,18 ft
- Colour White Carrara RAL 9016 (Code 55BX5) or Cast Iron (Code 55FMX5)
- Heated area roughly 20-25 m<sup>2</sup> / 215,28-269,10 ft<sup>2</sup> (\*see page 37)



### HELIOSA 55 - 2000 WATTS IPX5 WATERPROOF (Code 55BMOB / 55FMOB)

- Model with 5 m / 16,40 ft electric cable for special installation
- For inside areas or outside areas
- Power 2000 Watts
- IPX5 protection rating - Totally protected against rain and water sprays (Star Progetti Patent)
- Accessories provided:
  - 5 m / 16,40 ft electrical cable with schuko plug
  - stainless steel grid, support for attachment to mobile stand
- Colour White Carrara RAL 9016 (Code 55BMOB) or Cast Iron (Code 55FMOB)
- Heated area roughly 20-25 m<sup>2</sup> / 215,28-269,10 ft<sup>2</sup> (\*see page 37)



DIMENSIONS	46,5x14x22 cm	18,30x5,51x8,66 Inc.
PACKAGING	51,7x32,3x21,5 cm	20,35x12,71x8,46 Inc.
NET WEIGHT	1,90 kg	4,18 lb
GROSS WEIGHT	2,80 kg	6,17 lb
PALLET	35 pcs.	
	8025947102923 (Code 55B20 White Carrara)	
	8025947102930 (Code 55BX5 White Carrara)	
BAR CODE	8025947102961 (Code 55FMX5 Cast Iron)	
	8025947102947 (Code 55BMOB White Carrara)	
	8025947102954 (Code 55FMOB Cast Iron)	



REGISTERED MODELS HELIOSA® HI DESIGN is a registered trademark of STAR PROGETTI's heaters

# HELIOSA® 66

## Hi-design

by STAR PROGETTI



### HELIOSA 66 - 2000 WATTS IPX5 WATERPROOF (Code 66B20)

- Revolving model with wall bracket
- For inside areas or outside areas
- Power 2000 Watts
- IPX5 protection rating - Totally protected against rain and water sprays (Star Progetti Patent)
- Accessories provided:
  - 1,5 m / 4,92 ft electrical cable, stainless steel grid
  - wall bracket
- Max wall installation height 2,70-3,00 m / 8,85-9,84 ft
- Colour White Carrara RAL 9016
- Heated area roughly 25-28 m<sup>2</sup> / 269,10-301,39 ft<sup>2</sup> (\*see page 37)



### HELIOSA 66 - 1500 WATTS IPX5 WATERPROOF (Code 66BX5 / 66FMX5)

- Model with 5 m / 16,40 ft electric cable for special installation
- For inside and outside areas
- Power 1500 Watts
- IPX5 protection rating - Totally protected against rain and water sprays (Star Progetti Patent)
- Accessories provided:
  - 5 m / 16,40 ft electrical cable, schuko plug, stainless steel grid
  - wall bracket and support for attachment to mobile stand
- Max wall installation height 2,50-2,80 m / 8,20-9,18 ft
- Colour White Carrara RAL 9016 (Code 66BX5) or Cast Iron (Code 66FMX5)
- Heated area roughly 20-25 m<sup>2</sup> / 215,28-269,10 ft<sup>2</sup> (\*see page 37)

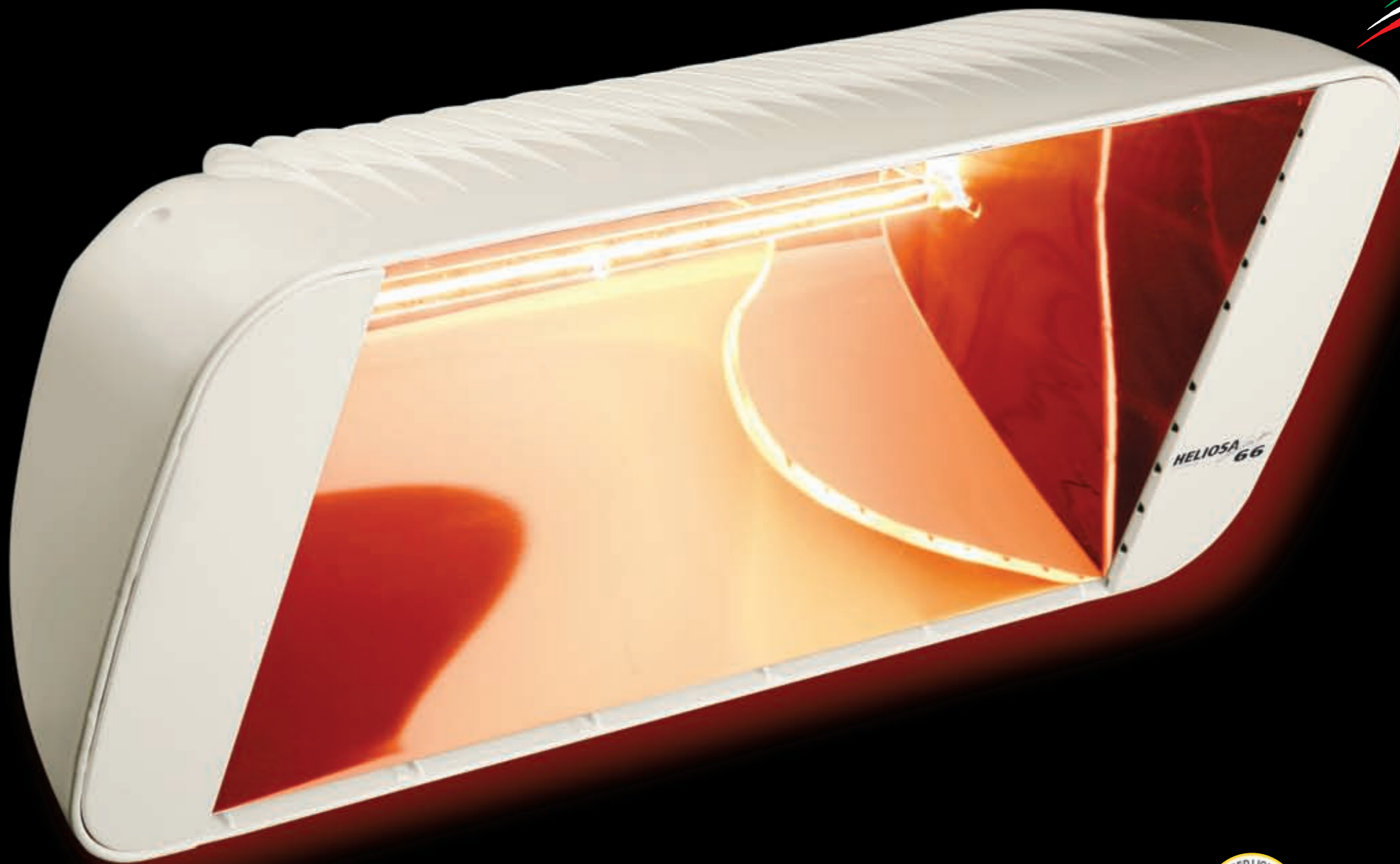


### HELIOSA 66 - 2000 WATTS IPX5 WATERPROOF (Code 66BMOB / 66FMOB)

- Model with 5 m / 16,40 ft electric cable for special installation
- For inside areas or outside areas
- Power 2000 Watts
- IPX5 protection rating - Totally protected against rain and water sprays (Star Progetti Patent)
- Accessories provided:
  - 5 m / 16,40 ft electrical cable with schuko plug, stainless steel grid
  - support for attachment to mobile stand
- Colour White Carrara RAL 9016 (Code 66BMOB) or Cast Iron (Code 66FMOB)
- Heated area roughly 25-28 m<sup>2</sup> / 215,28-269,10 ft<sup>2</sup> (\*see page 37)



DIMENSIONS	51x16x21,5 cm	20,07x6,29x8,46 inc.
PACKAGING	56x32x21,5 cm	22,04x12,59x8,46 inc.
NET WEIGHT	2,10 kg	4,62 lb
GROSS WEIGHT	3,00 kg	6,61 lb
PALLET	35 pcs.	
BAR CODE	8025947102992	(Code 66B20 White Carrara)
	8025947102978	(Code 66BX5 White Carrara)
	8025947103005	(Code 66FMX5 Cast Iron)
	8025947103012	(Code 66BMOB White Carrara)
	8025947103029	(Code 66FMOB Cast Iron)



Special Infracolor® Amber light bulb (optional), reducing the light output by 80% and creating a pleasant environment.

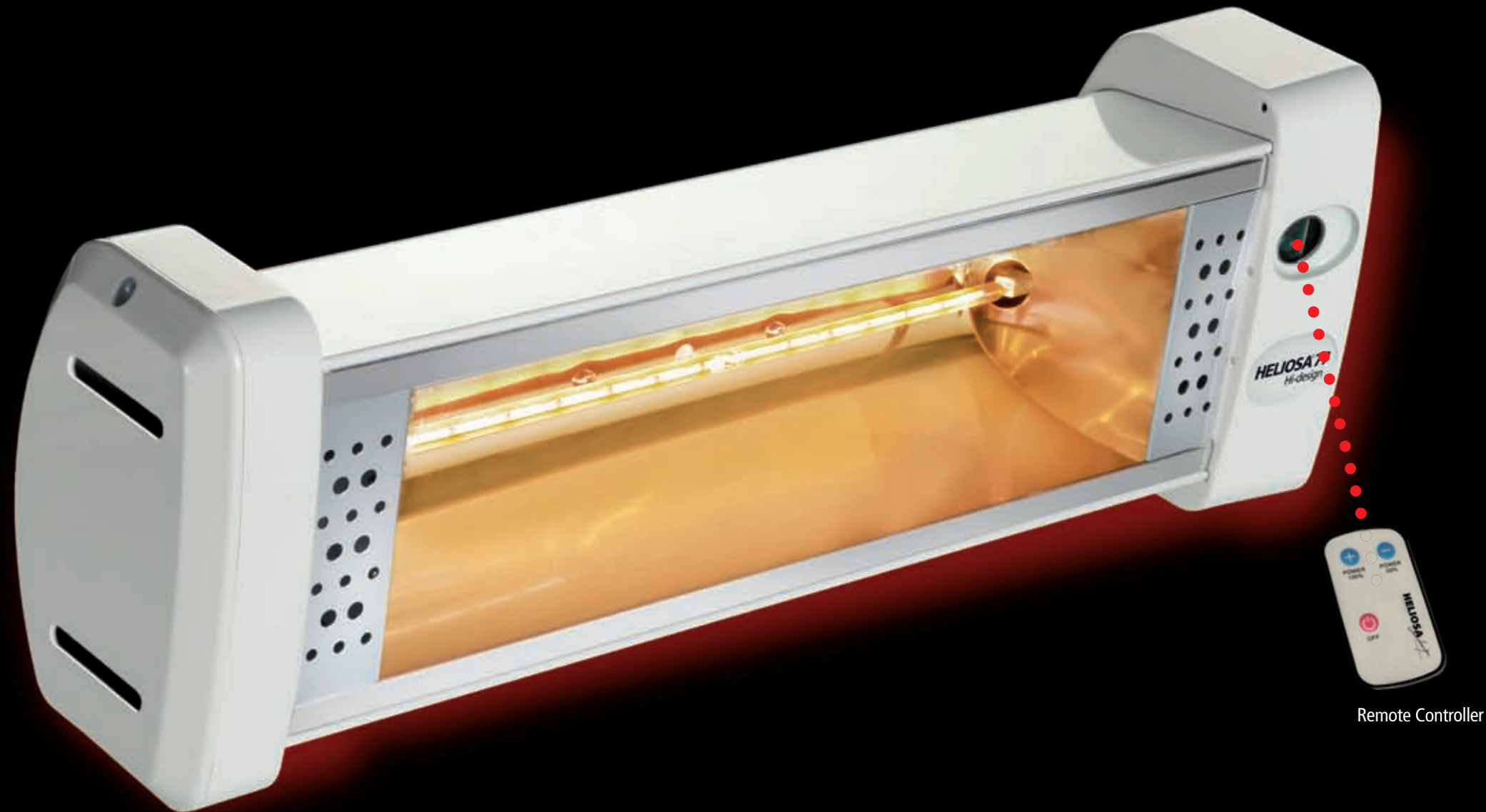


REGISTERED MODELS HELIOSA® HI DESIGN is a registered trademark of STAR PROGETTI's heaters



# HELIOSA® 77

by STAR PROGETTI Hi-design



Remote Controller

## HELIOSA 77 - 2000 WATTS IPX5 WATERPROOF WITH REMOTE CONTROLLER (cod. 77B20T)

- Revolving model for wall installation
- For inside areas or outside areas
- Power 2000 Watts
- IPX5 protection rating - Totally protected against rain and water sprays (Star Progetti Patent)
- Accessories provided:
  - 5 m / 16,40 ft electrical cable, schuko plug
  - remote control with power on 50% - 100% - STOP, reduction on energy consumptions, soft start
  - stainless steel grid
  - wall bracket
- Max wall installation height 2,30-2,50 m / 7,54-8,20 ft
- Colour White Carrara RAL 9016
- Heated area roughly 15-20 m<sup>2</sup> / 161,46-215,28 ft<sup>2</sup> (\*see page 37)



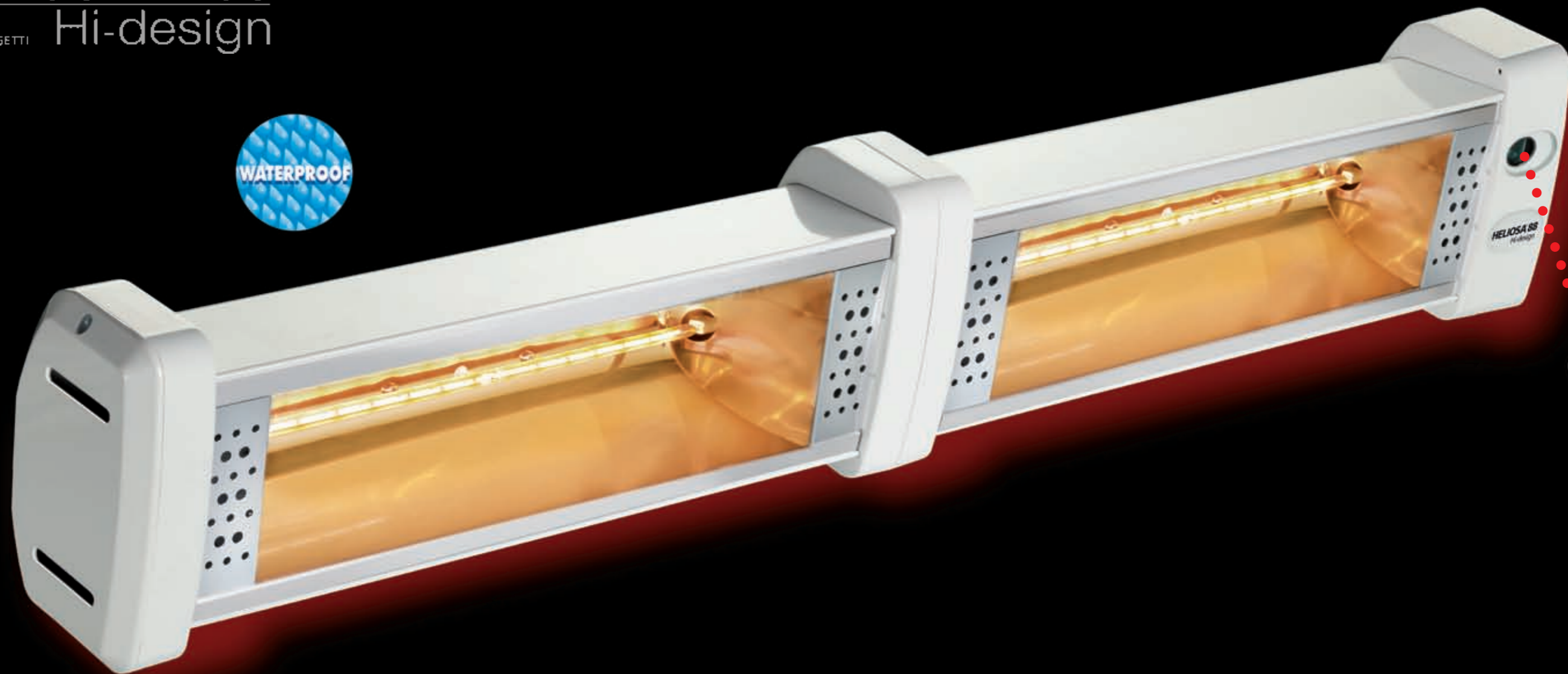
DIMENSIONS	47,5x14x15,5 cm	18,70x5,51x6,10 inc.
PACKAGING	52,5x21,5x21,5 cm	20,66x8,46x8,46 inc.
NET WEIGHT	1,70 kg	3,74 lb
GROSS WEIGHT	2,60 kg	5,73 lb
PALLET	49 pcs.	
BAR CODE	8025947106532 (cod. 77B20T)	



# HELIOSA® 88

by STAR PROGETTI

## Hi-design



Remote Controller

### HELIOSA 88 - 3000 WATTS IPX5 WATERPROOF WITH REMOTE CONTROLLER (Code 88B30T)

- Revolving model with wall bracket
- For inside areas or outside areas
- Power 3000 Watts (2x1500 Watts)
- IPX5 protection rating - Totally protected against rain and water sprays (Star Progetti Patent)
- Accessories provided:
  - 1,5 m / 4,92 ft electrical cable
  - remote control with power on 50% - 100% -STOP, reduction on energy consumptions, soft start
  - stainless steel grid
  - wall bracket
- Max wall installation height 3,00 m / 9,84 ft
- Colour White Carrara RAL 9016
- Heated area roughly 20-25 m<sup>2</sup> / 215,28 -269,10 ft<sup>2</sup> (\*see page 37)



DIMENSIONS	89x15x15,5 cm	35,03x5,90x6,10 inc.
PACKAGING	95,5x21,3x21 cm	37,59x8,38x8,26 inc.
NET WEIGHT	3,00 kg	6,61 lb
GROSS WEIGHT	3,90 kg	8,59 lb
PALLET	24 pcs.	
BAR CODE	8025947103289 (Code 88B30T)	



# HELIOSA® 991

Hi-design

by STAR PROGETTI



**HELIOSA 991X5** - 1500 WATTS IPX5 WATERPROOF (Code 991X5) White Carrara

**HELIOSA 992X5** - 1500 WATTS IPX5 WATERPROOF (Code 992X5) Cast Iron

- Model on mobile stand complete with HELIOSA® 11 heater and Scala support in steel
- For inside areas or outside areas
- Power 1500 Watts
- IPX5 protection rating - Totally protected against rain and water sprays (Star Progetti Patent)
- Accessories provided:
  - 5 m / 16,40 ft electric cable
  - schuko plug
  - stainless steel grid
  - support for attachment to mobile stand
- Heater and Scala support colour White Carrara RAL 9016 (Code 991X5)
- Heater and Scala support colour Cast Iron (Code 992X5)
- Heated area roughly 12-15 m<sup>2</sup> / 129,17-161,46 ft<sup>2</sup> (\*see page 37)



UNIT DIMENSIONS	45,5x13x9 cm	17,91x5,11x3,54 inc.
BASIS OVERALL DIMENSIONS	50x38 cm	19,68x14,96 inc.
SCALA SUPPORT WIDTH	9 cm	3,54 inc.
HEIGHT	213 cm	83,85 inc.
THE "SCALA" SUPPORT CONSISTS OF N. 3 PIECES.		
PACKAGING (support)	107x44x10 cm	42,12x17,32x3,93 inc.
(heater)	50,5x21x14,5 cm	19,88x8,26x5,70 inc.
NET WEIGHT (Code 991-992)	12,40 kg	27,33 lb
GROSS WEIGHT (Code 991-992)	13,30 kg	29,32 lb
PALLET	21 pcs.	
BAR CODE	8025947103494 (Code 991X5)	
	8025947103500 (Code 992X5)	



# HELIOSA® 992

Hi-design

by STAR PROGETTI



Code 991X5

Code 992X5

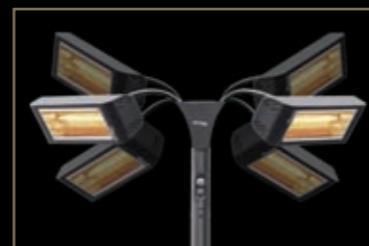


Special Infracolor® Amber light bulb, reducing the light output by 80% and creating a pleasant environment.

REGISTERED MODELS  
HELIOSA® HI DESIGN is a registered trademark of STAR PROGETTI's heaters

# HELIOSA® 993

by STAR PROGETTI Hi-design



THE FLEXIBLE ARMS ENABLE TO DIRECT THE HEATERS TOWARDS THE DESIRED ZONES



## HELIOSA 993 - 3000 WATT IPX5 WATERPROOF (Code 993)

- Completely revolving model, with adjustable height and flexible arms: you can direct the infrared rays to the exact areas where and when required
- For outdoor areas
- Power 3000 Watts (2x 1500 Watts)
- IPX5 protection rating - Totally protected against rain and water sprays (Star Progetti Patent)
- Accessories provided:
  - 4 m / 13,12 ft electrical cable
  - schuko plug
  - single power-on button on pole
- Anti-tilt device - cuts power if knocked over
- Heaters and structure in steel colour Cast Iron
- Heated area roughly 22-24 m<sup>2</sup> / 236,81-258,33 ft<sup>2</sup> (\*see page 37)



Special Infracolor® Amber light bulb, reducing the light output by 80% and creating a pleasant environment.

UNIT DIMENSIONS	45,5x13x9 cm	17,91x5,11x3,54 inc.
HEIGHT	210 cm	82,67 inc.
PACKAGING	29x49x105 cm	11,41x19,29x41,33 inc.
NET WEIGHT	18,00 kg	39,68 lb
GROSS WEIGHT	22,20 kg	48,94 lb
PALLET	7 pcs.	
BAR CODE	8025947103081	



REGISTERED MODELS  
HELIOSA® HI DESIGN is a registered trademark of STAR PROGETTI's heaters

# HELIOSA® TOWER

by STAR PROGETTI

## Hi-design

### ELECTRIC PATIO HEATER



2 SWITCHES TO LIGHT UP  
EITHER ONE OR TWO HEATERS

#### HELIOSA TOWER - 4000 WATTS IPX5 WATERPROOF (code VTOW40X5B)

- Free standing model, complete with floor stand and n. 2 heaters, Heliosa 66 model, adjustable both horizontally and vertically
- For inside and outside areas
- Power 4000 Watts (2x2000 Watts)
- IPX5 protection rating - Totally protected against rain and water sprays (Star Progetti Patent)
- Accessories provided:
  - 1 only power cable, 6 m. long / 19,68 ft
  - 32A industrial plug
  - 2 switches to light up either one or two heaters
  - shockproof and fall protection TILT device
  - 2 protection grids for the heaters
- Colours: White RAL 9016
- Heated area roughly 35-40 m<sup>2</sup> / 376,73-430,55 ft<sup>2</sup> (\*see page 37)



MODELLO CON  
CABLO 6 M.  
MODELLO SENZA C.  
ELETTRICO 6 M.

DIMENSIONS HEATER	51x21x15 cm	20,08x8,26x5,91 inc.
HEIGHT (with heaters)	222 cm	87,40 inc.
DIMENSIONS SUPPORT	base 70x82 cm	27,56x32,28 inc.
	side arm 80 cm	31,50 inc.
PACKAGING	120x24,5x43 cm	47,24x9,65x16,93 inc.
NET WEIGHT	21,00 kg	46,30 lb
GROSS WEIGHT	22,00 kg	48,50 lb
PALLET	15 pz.	
BAR CODE	8025947106723	



Special Infracolor® Amber light bulb,  
reducing the light output by 80% and  
creating a pleasant environment.



REGISTERED MODELS  
HELIOSA® HI DESIGN is a registered trademark  
of STAR PROGETTI's heaters



# HELIOSA® 994

## Hi-design

by STAR PROGETTI

### HELIOSA 994 - 2000 WATTS IPX5 WATERPROOF (Code 994)

- Model on mobile stand complete with HELIOSA® 66 heater
- For inside areas or outside areas
- Power 2000 Watts
- IPX5 protection rating - Totally protected against rain and water sprays (Star Progetti Patent)
- Accessories provided:
  - 5 m / 16,40 ft electrical cable
  - schuko plug
- Giraffa Support colour Cast Iron
- Heated area roughly 18-25 m<sup>2</sup> / 193,75-269,10 ft<sup>2</sup> (\* see page 37)



UNIT DIMENSIONS	51x16x21,5 cm	20,07x6,29x8,46 inc.
BASIS OVERALL DIMENSIONS	50x50 cm	19,68x19,68 inc.
HEIGHT	236 cm	92,91 inc.
PACKAGING	(support)	110x30x14 cm 43,30x11,81x5,51 inc.
	(heater)	56x32x21,5 cm 22,04x12,59x8,46 inc.
NET WEIGHT	15,00 kg	33,06 lb
GROSS WEIGHT	17,00 kg	35,27 lb
PALLET	16 pcs.	
BAR CODE	8025947103098	

### HELIOSA 995 - 2000 WATTS IPX5 WATERPROOF (Code 995)

- Model on mobile stand complete with HELIOSA® 55 heater
- For inside areas or outside areas
- Power 2000 Watts
- IPX5 protection rating - Totally protected against rain and water sprays (Star Progetti Patent)
- Accessories provided:
  - 5 m / 16,40 ft electrical cable
  - schuko plug
- Giraffa Support colour Cast Iron
- Heated area roughly 15-20 m<sup>2</sup> / 161,46-215,28 ft<sup>2</sup> (\* see page 37)



UNIT DIMENSIONS	46,5x14x22 cm	18,30x5,51x8,66 inc.
BASIS OVERALL DIMENSIONS	50x50 cm	19,68x19,68 inc.
HEIGHT	234 cm	92,12 inc.
PACKAGING	(support)	110x30x14 cm 43,30x11,81x5,51 inc.
	(heater)	51,7x32,3x21,5 cm 20,35x12,71x8,46 inc.
NET WEIGHT	14,90 kg	32,84 lb
GROSS WEIGHT	16,80 kg	37,03 lb
PALLET	16 pcs.	
BAR CODE	8025947103104	

Code 994

Code 995



Special Infracolor® Amber light bulb, reducing the light output by 80% and creating a pleasant environment.



# HELIOSA® 995

## Hi-design

by STAR PROGETTI



REGISTERED MODELS  
HELIOSA® HI DESIGN is a registered trademark of STAR PROGETTI's heaters



# HELIOSA® 996

by STAR PROGETTI

## Hi-design



**HELIOSA 996** - 3000 WATTS IPX5 (Code 996) White Carrara  
**HELIOSA 997** - 3000 WATTS IPX5 (Code 997) Cast Iron  
**WATERPROOF**

- Model complete with 2 HELIOSA® 11 heaters and revolving, flexible arms
- For inside and outside areas
- Power 3000 Watts (2x 1500 Watts)
- IPX5 protection rating - Totally protected against rain and water sprays (Star Progetti Patent)
- Accessories provided:
  - wall bracket
- Structure in steel colour White Carrara RAL 9016 (Code 996) or Cast Iron (Code 997)
- Heated area roughly 20-25 m<sup>2</sup> / 215,28-269,10 ft<sup>2</sup> (\*see page 37)



Code 996

HEATER DIMENSIONS	45,5x13x9 cm	17,91x5,11x3,54 inc.
ARM OPENING	100 cm	39,37 inc.
PROJECTING FROM WALL	43 cm	16,92 inc.
PACKAGING	47x47x24 cm	18,50x18,50x9,44 inc.
NET WEIGHT	3,80 kg	8,37 lb
GROSS WEIGHT	4,80 kg	10,58 lb
PALLET	21 pcs.	
BAR CODE	8025947103111 (Code 996 White Carrara) 8025947103128 (Code 997 Cast Iron)	

**HELIOSA 998** - 1500 WATTS IPX5 (Code 998) White Carrara  
**HELIOSA 999** - 1500 WATTS IPX5 (Code 999) Cast Iron  
**WATERPROOF**

- Model complete with HELIOSA® 11 heater and revolving, flexible arm
- For inside and outside areas
- Power 1500 Watts
- IPX5 protection rating - Totally protected against rain and water sprays (Star Progetti Patent)
- Accessories provided:
  - wall bracket
- Structure in steel colour White Carrara RAL 9016 (Code 998) or Cast Iron (Code 999)
- Heated area roughly 12-15 m<sup>2</sup> / 129,17-161,46 ft<sup>2</sup> (\*see page 37)



Code 999

HEATER DIMENSIONS	45,5x13x9 cm	17,91x5,11x3,54 inc.
PROJECTING FROM WALL	40 cm	15,74 inc.
PACKAGING	47x47x12 cm	18,50x18,50x4,72 inc.
NET WEIGHT	2,20 kg	4,85 lb
GROSS WEIGHT	3,20 kg	7,05 lb
PALLET	16 pcs.	
BAR CODE	8025947103135 (Code 998 White Carrara) 8025947103142 (Code 999 Cast Iron)	



Special Infracolor® Amber light bulb, reducing the light output by 80% and creating a pleasant environment.



# HELIOSA® 997

by STAR PROGETTI

## Hi-design

# HELIOSA® 998

by STAR PROGETTI

## Hi-design

# HELIOSA® 999

by STAR PROGETTI

## Hi-design



THE FLEXIBLE ARMS ENABLE TO DIRECT THE HEATERS TOWARDS THE DESIRED ZONES



REGISTERED MODELS  
 HELIOSA® HI DESIGN is a registered trademark of STAR PROGETTI's heaters





**OBELISK LIGHTING & HEATING WATERPROOF** (code OBE0002B)



- It is made from eco-friendly, recyclable HDPE (high density polyethylene) whose features include high impact and temperature resistance. It is weatherproof, UV stable and will not corrode.
- It comprises two parts: a base with support and the main body 208 cm tall (approx).
- For outside areas
- Protection Index: IP54
- Led lighting
- Consumption 34 watts
- Supplied:
  - single 3-metre electrical cable
  - schuko plug
  - wireless on/off command inside the support
  - remote control for switching on Obelisk only, or the heater only (if provided for), or both.
- Colours White Carrara RAL 9016

DIMENSIONS BASE	52x42 cm	22,44x16,53 inc.
HEIGHT	208 cm	81,89 inc.
PACKAGING	53x42x215 cm	20,87x16,53x84,64 inc.
NET WEIGHT	9 kg	19,84 lb
GROSS WEIGHT	10 kg	22,04 lb
BAR CODE	8025947106488	

**OBELISK KIT** (optional accessory)

Thanks to the OBELISK KIT you can mount an infrared heater of the Heliosa® Hi-Design range for up to 2000 W. maximum power on the top of OBELISK.

The kit includes:

- electrical cable to be inserted inside Obelisk
- support for attaching and detaching the heater
- waterproof connectors for rapidly connecting the heater
- cable glands



Easy coupling and uncoupling of the heater



One single power cable is used for both Obelisk and heater



Remote control connected with an electronic card, allows to switch on just the Obelisk light or just the heater, or both of them



Special Infracolor® Amber light bulb, reducing the light output by 80% and creating a pleasant environment.



REGISTERED MODELS  
HELIOSA® HI DESIGN is a registered trademark of STAR PROGETTI's heaters



# HELIOSA® HI-DESIGN ACCESSORIES

## UMBRELLAS, CANOPIES AND STRUCTURES



**BRACKET FOR INSTALLATION ON A ROUND POLE OR SQUARE POLE OF A PARASOL**

Colour White Carrara RAL 9016  
Opening up to 66 mm / 2,59 inc. (Code 101B)  
Opening up to 100 mm / 3,93 inc. (Code 102B)



**ROTATING BRACKET FOR FIXING THE APPLIANCE UNDER CANOPIES, PARASOLS AND STRUCTURES**

Dimensions 15x5x4,7 cm / 5,90x1,96x1,85 inc.  
Connection for the parasol rib up to 41 mm / 1,61 inc.  
Colour White Carrara RAL 9016 (Code 103B)



**ROTATING BRACKET FOR FIXING THE APPLIANCE UNDER CANOPIES, PARASOLS AND STRUCTURES**

Dimensions 30x5x4,7 cm / 11,81x1,96x1,85 inc.  
Connection for the parasol rib up to 41 mm / 1,61 inc.  
Colour White Carrara RAL 9016 (Code 104B)



**"TRIS" BRACKET FOR FIXING N.3 APPLIANCES TO THE POLE OF THE PARASOL, CAN BE OPENED BY HINGE**

Round pole from 4 cm to 13 cm / 1,57 inc. to 5,11 inc.  
Square pole from 4x4 cm to 8x8 cm / 1,57x1,57 inc. to 3,14x3,14 inc.  
White Carrara RAL 9016 (Code 105B)



**BRACKET FOR WALL MOUNTING AND UNDER CANOPIES**

Dimensions 15x9x3 cm / 5,90x3,54x1,18 inc.  
Colour White Carrara RAL 9016 (Code 106B)



**SUPPORT FOR INSTALLATION OF THE APPLIANCE ON OASidehor® SYSTEM**

The support is inserted into the screen profile.  
Dimensions 50x4x4 cm / 19,68x1,57x1,57 inc.  
Colour White Carrara RAL 9016 (Code 107B) Colour Cast Iron (Code 107FM)



**PANTOGRAPH WALL-SUPPORT MODEL**

Black Colour (code 112N)

## POWER REGULATOR

### POWER REGULATOR

Specific to instantly adjust the heat output of HELIOSA® HI DESIGN appliances

#### THE ADVANTAGES

- Easy to install: directly in the wall socket or in the electrical board
- Temperature maximization
- Device for reduction of power consumption
- Built-in antiparasite filter EMC electromagnetic compatibility EMC (compulsory according to CE regulations)
- Protection against power intermittance
- Possibility of connection to a timer
- Possibility of connection to a thermostat for temperature control
- Possibility of connection to a presence detector



#### STAR 1EX

- Power regulator: from 0 to 2000 Watts singlephase
- For wall socket
- Weight: 0,410 kg / 0,90 lb
- Dimensions: 6x13,5x6 cm 2,36x5,31x2,36 inc.
- Code STAR1EX



#### STAR 2

- Power regulator: from 0 to 4000 Watts singlephase
- For switchboard
- Weight: 0,870 kg / 1,91 lb
- Dimensions: 9x10,5x12 cm 3,54x4,13x4,72 inc.
- Code STAR2



#### STAR 3

- Power regulator: from 0 to 8000 Watts singlephase
- For switchboard
- Weight: 1,340 kg / 2,95 lb
- Dimensions: 9x16x12 cm 3,54x6,29x4,72 inc.
- Code STAR3



#### STAR 4

- Power regulator: up to 3000 Watts singlephase
- For wall socket and for switchboard
- Weight: 0,410 kg / 0,90 lb
- Dimensions: 21x7,5x8,5 cm 8,26x2,95x3,34 inc.
- Code STAR4NEW



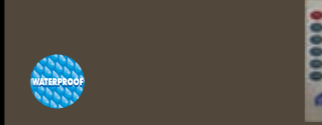
#### STAR 5 TRIFASE

- Power regulator: from 0 to 9000 Watts threephase
- For switchboard
- Weight: 1,230 kg / 2,71 lb
- Dimensions 9x16x12 cm 3,54x6,29x4,72 inc.
- Code STAR5



#### POWER REGULATOR WIRELESS STAR 6

- Power regulator: from 0 to 6000 Watts
- 100% adjustable
- For wall
- 3 preset channels
- Waterproof IP54
- Code STAR6



#### Presence detector for the automatic start of the heater

- Power detected (max): 3.0 kW
- Colour: black
- Detection radius: 220 degrees
- 220-240 V
- Dimensions 15x15x8 cm 5,90x5,90x3,14 inc.
- Code ST13



**"TRIS" BRACKET FOR FIXING N.3 APPLIANCES TO THE POLE OF THE PARASOL, CAN BE OPENED BY HINGE**

Round pole from 4 cm to 13 cm / 1,57 inc. to 5,11 inc.  
Square pole from 4x4 cm to 8x8 cm / 1,57x1,57 inc. to 3,14x3,14 inc.  
White Carrara RAL 9016 (Code 105B)

**BRACKET FOR WALL MOUNTING AND UNDER CANOPIES**

Dimensions 15x9x3 cm / 5,90x3,54x1,18 inc.  
Colour White Carrara RAL 9016 (Code 106B)

**SUPPORT FOR INSTALLATION OF THE APPLIANCE ON OASidehor® SYSTEM**

The support is inserted into the screen profile.  
Dimensions 50x4x4 cm / 19,68x1,57x1,57 inc.  
Colour White Carrara RAL 9016 (Code 107B) Colour Cast Iron (Code 107FM)

**PANTOGRAPH WALL-SUPPORT MODEL**

Black Colour (code 112N)

#### SW3500 IP45

##### Remote control switch

- For inside and outside areas
- Wireless
- Remote control
- 3 preset channels
- Max 3500 watt
- It operates on 3 areas
- Code SW3500

To connect to the unit or to the electrical system



##### REMOTE CONTROL SWITCH FOR ONE OR MORE HEATERS

- Operating distance: 25 m without obstacles
- Detected power (max): 2200 watts per socket
- Remote control
- 3 preset channels
- It operates on 3 areas
- Code 205S/3

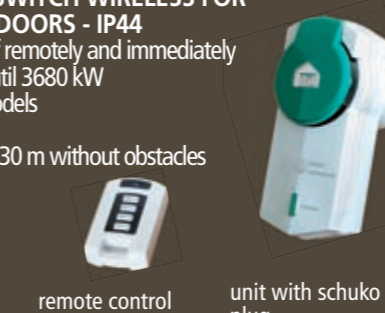
to connect the electrical system



##### REMOTE CONTROL SWITCH WIRELESS FOR INDOORS AND OUTDOORS - IP44

- Used to turn on and off remotely and immediately one or more heaters until 3680 kW
- For wall and mobile models
- No installation
- Operating distance: 25/30 m without obstacles
- Remote control
- Code 206S/1

remote control



remote control

unit with schuko plug

##### STAR BLUEAPP BOX

- For control heaters from smartphone
- Dimensions: 19,5x12x6,5 cm 7,68x4,72x2,56 inc.
- Waterproof: IP65 for indoors and outdoors
- Power max 4400W (2 device of 2200 watts)
- Heat Controller: 0%-100%
- Infrared remote control with 3 buttons ON/OFF,+,-
- Led RGB
- Code STAR7



# HELIOSA® HI-DESIGN ACCESSORIES

## MOBILE SUPPORT

These supports, which are very refined and slender, have been designed to enhance the characteristics of the HELIOSA® HI DESIGN heaters, perfectly complementing any type of furnishing. These supports are for both indoor and outdoor use of the appliance. Thanks to their design, they perfectly suit every kind of environment and every kind of furnishing. The mobile supports are suitable for any HELIOSA® model, except for model n.88.

### SCALA SUPPORT

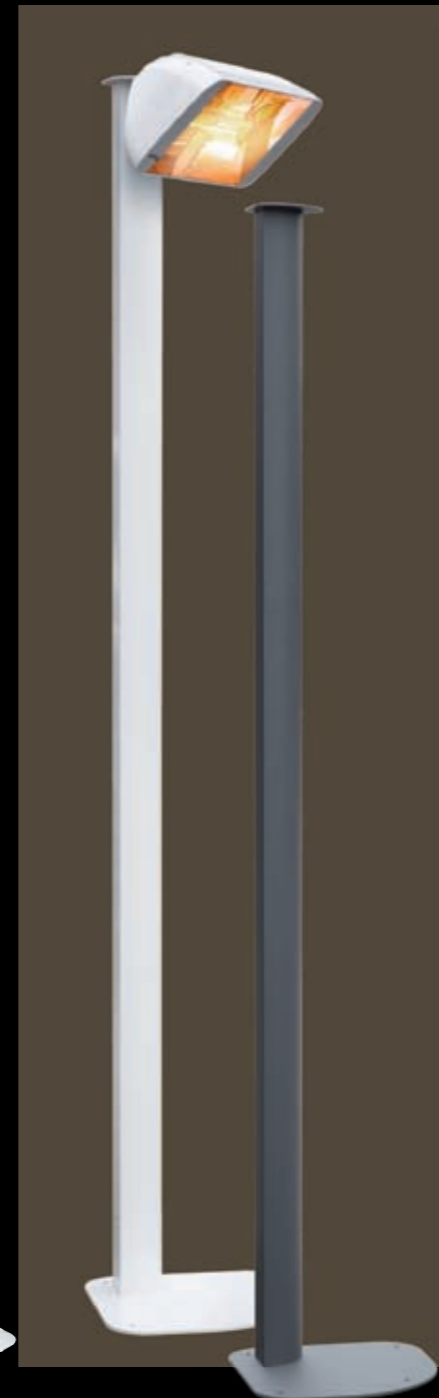
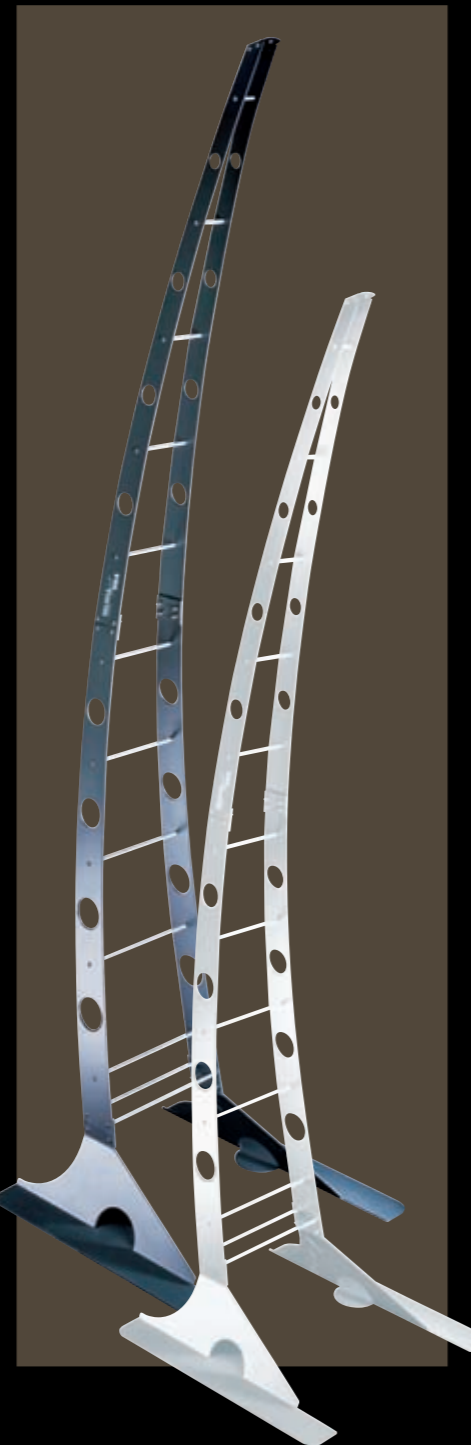
- Support and base in polyester powder coated steel in White Carrara ral 9016 colour (code 201B)
- Support and base in polyester powder coated steel in Micaceous Iron colour (code 201FM)
- Triangular base 50x38 cm / 19,69x14,96 inc.
- Structure width 9 cm / 3,54 inc.
- Support height 200 cm / 78,74 inc.
- Complete with metal support accessory for connecting two heaters opposite each other\*

### GIRAFFA SUPPORT

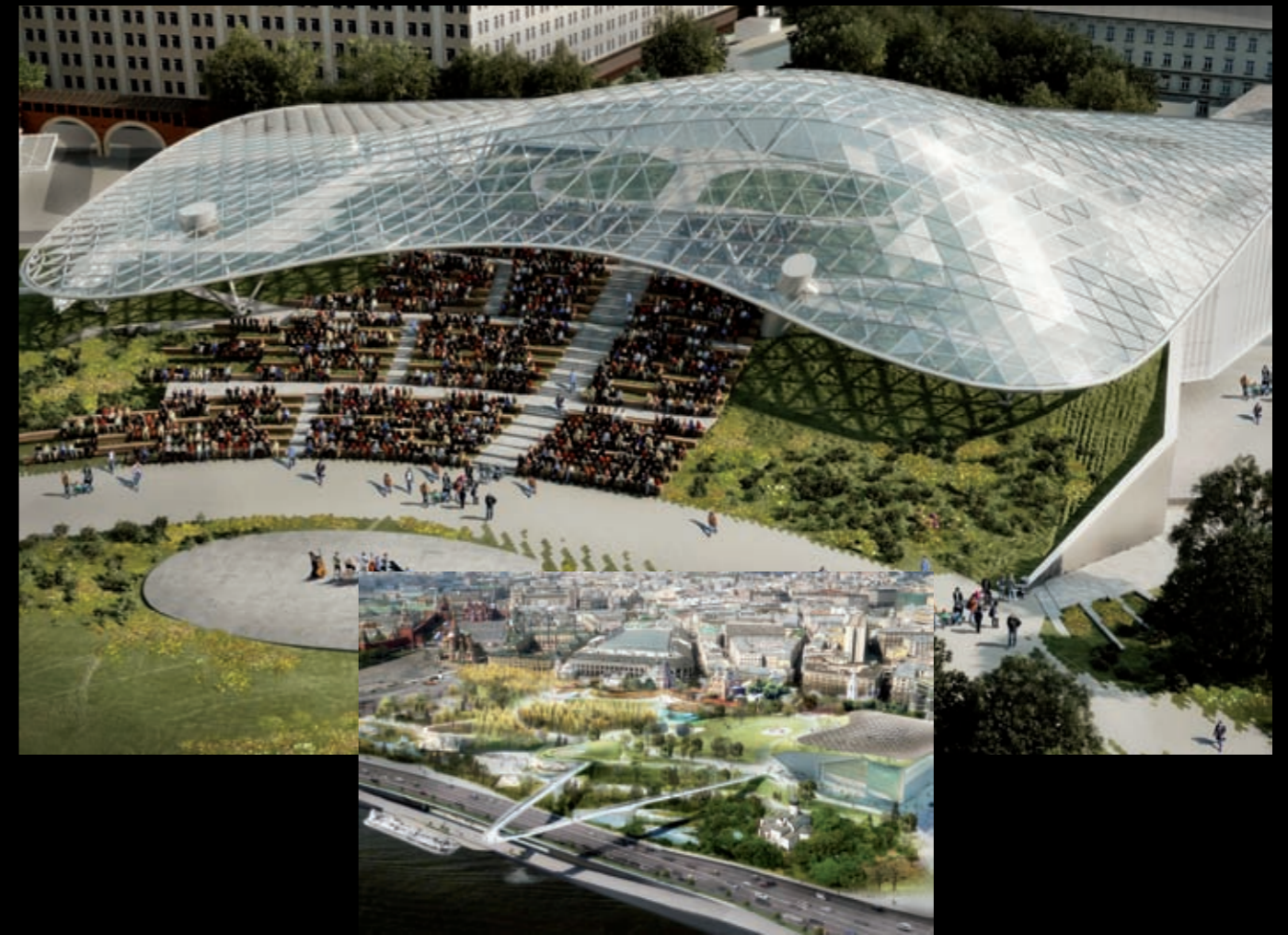
- Silver coloured steel structure
- Base dimensions 50x50 cm / 19,69x19,69 inc.
- Height 218 cm / 85,83 inc.
- Code GIRAFFA (colour Cast Iron)
- Code GIRAFFA B (colour White Carrara RAL 9016)

### COLUMN SUPPORT

- Silver colour aluminium frame with triangular base 37x37 cm / 14,57x14,57 inc.
- Height 210 cm / 82,68 inc.
- Colour White or Micaceous Iron CODE 202B - 202 FM
- Equipped with wireless remote control cod. 206S/1



# CASE HISTORY



## STAR PROGETTI HAS BEEN CHOICE TO HEAT ONE OF THE LARGEST GLASS DOMES IN THE WORLD

In the Zaryadye Park in Moscow, the infrared heater by Star Progetti The Helios Titan heating were chosen to heat one of the largest glass dome in the world.

The Helios Titan heating by Star Progetti have been installed at a height of 5,5 metres to heat the amphitheatre dome, designed to protect visitors to the park from the rain.



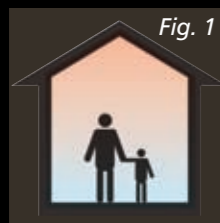
### WHY CHOOSE INFRARED HEATERS FROM STAR PROGETTI

#### LOCAL WARMING

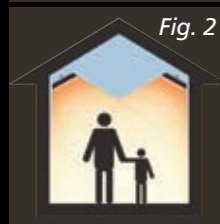
In drawings (Figs. 1 and 2) you can see the differences between a traditional hot air system and the heat produced by HELIOSA® Hi-design. Like the sun, it is an immediate, ecological heat, without movement of air and without dispersion.

With the local warming of HELIOSA® Hi-design it is possible to heat only the areas of interest and for the necessary time.

The savings compared to traditional systems is over **70%**.



**TRADITIONAL HOT AIR SYSTEM**  
The warm air rises upwards, forms layers and disperses in the openings: people remain in the cold with high costs.



**HELIOSA® HI-DESIGN**  
As with light, the heat is aimed and maintained, without dispersion, only on areas of interest. The result is solar-quality heat, a comfortable environment, without noise and dust, only for the time necessary, with significant energy savings: over 70% because it only heats the areas of interest.

### TIPS FOR A CORRECT INSTALLATION

#### MAXIMUM COMFORT

The areas of coverage may vary depending on heater model, installation height and synergy with additional heaters installed. To optimize user comfort, it is recommended to consider heat power, coverage area and recommended installation height. Star Progetti offers free technical assistance to all its customers for correct sizing.

#### BASIC TECHNIQUE

As a basic technique it is advisable simulate the use of a spot lighting system where lamps are placed on the wall and aimed at the areas to be illuminated. As in lighting, it is recommended to arrange the sources uniformly to reduce shadow areas and maximize heated area. In the hospitality industry note that the longer the stay of the guests, the more irradiation is required to ensure adequate comfort. In case of high humidity levels, it is advisable to increase the amount of irradiation.

#### HEATER ORIENTATION

To optimize heat efficiency, the wall-, ceiling- and support-mounted heaters must be oriented at 45° and at the distances recommended in the instruction manual. The 45° installation allows a larger heated area and a transverse heat that better reaches the surfaces to be heated, both on persons and objects. The intersection of the heat beams allows, with a good installation, uniform coverage of all the areas desired.

#### \*HEATED AREAS

The heated areas indicated can vary according to the installation height, the environmental conditions and the synergy produced when several heaters installed. In the latter case results can be significantly higher.

#### INSTALLATION ON MOBILE STANDS

The HELIOSA® HI DESIGN line includes mobile models with floor stands. The various models enable mobile heating placed near a wall without having to install specific electrical systems. Furthermore, they can easily be used in different areas according to requirements. (page 34)

#### WALL INSTALLATION

It is the most frequent solution and allows placing the heaters in a way that is noninvasive to the interior design. For wall installation each model includes an accessory for mounting and orientation.

#### INSTALLATION UNDER LARGE PARASOLS AND AWNINGS

For these installations, connection accessories are provided for each model (page 32).

#### SIZING

Free technical assistance is offered to all our customers for correct sizing.

#### InFraCaLoR® BULBS

All units are equipped with special InFraCaLoR® bulbs, that are a Star Progetti patent. InFraCaLoR® bulbs have a very long lifetime of roughly 7000 hours.



#### INFRARED IRK BULBS LONG LIFE

- 1300 Watt IP20 R7S CAPS
- 1500 Watt IPX5 connection by Faston M
- 2000 Watt IP20 SK15 CAPS.
- 2000 Watt IPX5 connection by Faston M.
- 1500 Watt IPX5 Infracolor® Amber light connection by Faston M.
- 2000 Watt IPX5 Infracolor® Amber light connection by Faston M.

#### STAINLESS STEEL PROTECTION GRIDS

All units are provided with protection grids which may be necessary if the unit is installed at a height lower than 2 m / 6,56 ft.

#### INSTALLATION SCHEMES



Angled (Plan view)



Wall mount (Plan view)



Alternate-walls mount (Plan view)



Optimal ceiling positioning



IPX5 protection level = Protected against water jets (Star Progetti Patent)

MODELS	CODE	POWER (WATT)	PROTECTION RATING	COLOUR	SPECIFIC FOR MOBILE SUPPORT	DIMENSIONS CM / INC.	NET WEIGHT KG / LB	BAR CODE	
	HELIOSA HI DESIGN 11	11B20	2000	IP20	White Carrara RAL 9016	X	45,5X13X9 17,91x5,11x3,54	1,00 2,20	8025947102800
		11FM20	2000	IP20	Cast Iron	X	45,5X13X9 17,91x5,11x3,54	1,00 2,20	8025947102824
		11BX5	1500	IPX5	White Carrara RAL 9016		45,5X13X9 17,91x5,11x3,54	1,00 2,20	8025947102817
		11FMX5	1500	IPX5	Cast Iron		45,5X13X9 17,91x5,11x3,54	1,00 2,20	8025947103524
	HELIOSA HI DESIGN 33	33B13	1300 R7S caps	IP20	White Carrara RAL 9016		43,5X13,5X12 17,12x4,72x5,31	1,10 2,42	8025947102862
	HELIOSA HI DESIGN 44	44B15	1500	IPX5	White Carrara RAL 9016		45,5X15,7X14 17,91x5,51x6,18	1,60 3,52	8025947102879
		44B20	2000	IPX5	White Carrara RAL 9016		45,5X15,7X14 17,91x5,51x6,18	1,60 3,52	8025947102886
		44BMOB	2000	IPX5	White Carrara RAL 9016	X	45,5X15,7X14 17,91x5,51x6,18	1,60 3,52	8025947102893
		44FMOB	2000	IPX5	Cast Iron	X	45,5X15,7X14 17,91x5,51x6,18	1,60 3,52	8025947102909
	HELIOSA HI DESIGN 55	55B20	2000	IPX5	White Carrara RAL 9016		46,5X14X22 18,30x5,51x8,66	1,90 4,18	8025947102923
		55BX5	1500	IPX5	White Carrara RAL 9016		46,5X14X22 18,30x5,51x8,66	1,90 4,18	8025947102930
		55FMX5	1500	IPX5	Cast Iron		46,5X14X22 18,30x5,51x8,66	1,90 4,18	8025947102961
		55BMOB	2000	IPX5	White Carrara RAL 9016	X	46,5X14X22 18,30x5,51x8,66	1,90 4,18	8025947102947
		55FMOB	2000	IPX5	Cast Iron	X	46,5X14X22 18,30x5,51x8,66	1,90 4,18	8025947102954
	HELIOSA HI DESIGN 66	66B20	2000	IPX5	White Carrara RAL 9016		51X16X21,5 20,07x6,29x8,46	2,10 4,62	8025947102992
		66BX5	1500	IPX5	White Carrara RAL 9016	X	51X16X21,5 20,07x6,29x8,46	2,10 4,62	8025947102978
		66FMX5	1500	IPX5	Cast Iron	X	51X16X21,5 20,07x6,29x8,46	2,10 4,62	8025947103005
		66BMOB	2000	IPX5	White Carrara RAL 9016	X	51X16X21,5 20,07x6,29x8,46	2,10 4,62	8025947103012
	66FMOB	2000	IPX5	Cast Iron	X	51X16X21,5 20,07x6,29x8,46	2,10 4,62	8025947103029	
	HELIOSA HI DESIGN 77 with remote control	77B20T	2000	IPX5	White Carrara RAL 9016	X	47,5X14X15,5 18,70x5,51x6,10	1,70 3,74	8025947106532
	HELIOSA HI DESIGN 88 with remote control	88B30T	3000	IPX5	White Carrara RAL 9016		89X15X15,5 35,03x5,90x6,10	3,00 6,61	8025947103289

MODELS	CODE	POWER (WATT)	PROTECTION RATING	COLOUR	SPECIFIC FOR MOBILE SUPPORT	DIMENSIONS CM / INC.	NET WEIGHT KG / LB	BAR CODE	
	HELIOSA HI DESIGN 991	991X5	1500	IPX5	White Carrara RAL 9016	Scala support in steel included	Height: 213 Height: 83,85	12,40 27,33	8025947103494
	HELIOSA HI DESIGN 992	992X5	1500	IPX5	Cast Iron	Scala support in steel included	Height: 213 Height: 83,85	12,40 27,33	8025947103500
	HELIOSA HI DESIGN 993	993	3000	IPX5	Cast Iron	Tubular support included	Height: 210 Height: 82,67	18,00 39,68	8025947103081
	HELIOSA HI DESIGN TOWER	VTOW40X5B	4000	IPX5	White Carrara RAL 9016	Tubular support included	Height: 222 (with heaters) Height: 87,40	21,00 46,30	8025947106723
	HELIOSA HI DESIGN 994	994	2000	IPX5	Cast Iron	Giraffa support included	Height: 236 Height: 92,91	15,00 33,06	8025947103098
	HELIOSA HI DESIGN 995	995	2000	IPX5	Cast Iron	Giraffa support included	Height: 234 Height: 92,12	14,90 32,94	8025947103104
	HELIOSA HI DESIGN 996	996	3000	IPX5	White Carrara RAL 9016	Wall applique support	Arm opening: 100 Arm opening: 39,37 Projecting from wall: 43 Projecting from wall: 16,92	3,80 8,37	8025947103111
	HELIOSA HI DESIGN 997	997	3000	IPX5	Cast Iron	Wall applique support	Arm opening: 100 Arm opening: 39,37 Projecting from wall: 43 Projecting from wall: 16,92	3,80 8,37	8025947103128
	HELIOSA HI DESIGN 998	998	1500	IPX5	White Carrara RAL 9016	Wall applique support	Projecting from wall: 40 Projecting from wall: 15,74	2,20 4,85	8025947103135
	HELIOSA HI DESIGN 999	999	1500	IPX5	Cast Iron	Wall applique support	Projecting from wall: 40 Projecting from wall: 15,74	2,20 4,85	8025947103142